

NAUTICAL INDUSTRY

With around 40% of the world's nautical charter fleet having its destination in Croatia in 2019, this is the natural home of all boaters and the heart of the marine composites market in Europe. Kelteks is known in this industry as a trusted partner and supplier for more than 30 years.

SEWER RESTORATION

Complex (2 layer) reinforcement made of ECR glass are designed to deliver chemical resistance, extreme durability and high mechanical performance according to the customer's expectations.

SPORTS & LEISURE

Glass, carbon or basalt fibre-reinforced composites are part of professional and amateur sport and leisure equipment. Our clients use our composite reinforcement fabrics for many years and our goal is to supply & support them for mutual benefit.



AUTOMOTIVE INDUSTRY

We are producing high-tech reinforcement fabrics in a large variety for demanding world of automotive industry. Our products will satisfy the highly specific tensile strength and resistance values as well as the excellent fire protection properties.

RAILWAY INDUSTRY

In rolling stocks, the significant advantages lie in achieving a 30% weight reduction compared to metal, leading to enhanced energy efficiency. The freedom of design afforded by composites allows for the creation of a wide range of interior and exterior components, shaping a more versatile and efficient railway landscape.

PULTRUSION INDUSTRY

Pultruded composites are used in various industries for applications requiring a combination of strength, durability, and corrosion resistance. Some common uses include structural components for construction, industrial supports & reinforcements in infrastructure projects.

ELECTRO INDUSTRY

The primary function of the products used in this application are electrical and thermal insulation. Their structure combines high-quality fibers, providing robust mechanical strength while providing excellent electrical insulation. These materials are key in creating reliable and safe electrical insulation solutions. Our materials find applications in various fields such as printed circuit boards, electric motor profiles, general engineering materials and more.

AEROSPACE

Engineered to meet the rigorous demands of the aerospace industry, our materials redefine possibilities. From lightweight structured to high strength components, our composite delivers high-performance, durability and efficiency.

kelteks.

the strongest link
in your composite

build solid.

kelteks.com

©2024 kelteks



CERTIFIED
ISO 9001
ISO 14001



We are a family owned business and we are proud of the long experience of our 350 well trained, highly educated and dedicated technical experts that ensure best products and services for you. You can trust us to be your partner for the complete value chain of your product, so that you can focus on your own business. Our 3 factories are located in the heart of Europe in beautiful Croatia, from where we supply our industrial customers in more than 30 countries. It goes without saying that we are certified according to DIN EN ISO 9001:2015 and DIN EN ISO 14001:2015

Croatia

📍 Dr. Slavka Rozgaja 3
47000 Karlovac Croatia - EU
☎ +385 47 693 314
✉ sales@solidian-kelteks.com

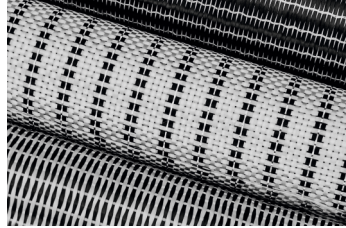
Germany

📍 Sigmaringer Straße 150
72458 Albstadt, Germany - EU
☎ + 49 7431 103135
✉ sales@solidian.com

Türkiye

📍 Mistral Tower Izmir K:42 D:42135170
35500 Izmir, Türkiye
☎ + 49 7431 103135
✉ sales-turkiye@solidian-kelteks.com

kelteks WOVEN ROVING

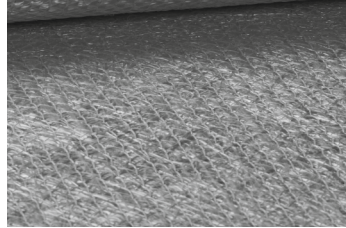


MATERIALS

- Glass
- Carbon
- Basalt
- Natural
- Hybrid

Woven roving is a reinforcement made from direct, assembled, or texturized fiberglass roving. Woven in a specific pattern for the purpose of providing high strength and lightweight to the end-product.

kelteks COMBIMAT

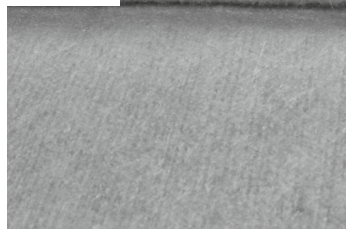


We are producing Combimat in many different variations, a combination of fabric with veil, mat or a combination of two fabrics layer. Solutions are unlimited in our production.

TECHNOLOGY

- Needeling
- Stitching

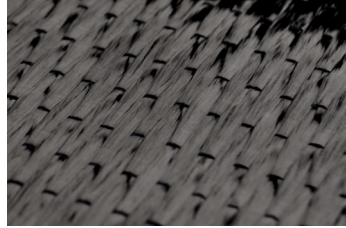
kelteks COMPLEX & NEEDLED



CHARACTERISTICS

- Adds volume to the laminate
- Dedicated to parts with sharp angles
- Does not fray
- Gives a better surface aspect
- Improve the surface appearance
- Creates a barrier against UV or chemical attack
- Saves preparation time
- Perfect corner filling
- Improved resin flow

kelteks UD



MATERIAL

- Glass
- Carbon
- Natural

Unidirectional fabric constitutes a form of non-woven reinforcement characterized by the alignment of all fibers in a singular or parallel direction. This configuration enables a concentrated fiber density, resulting in optimal longitudinal tensile strength.

kelteks NATURAL



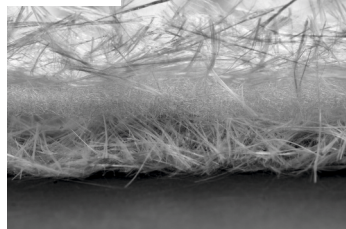
ARTICLES

- Woven Roving
- Grid
- UD

CHARACTERISTICS

- Good impregnation
- Lightweight
- Sustainable
- Bio-degradable
- Low energy consumption
- Co2 neutral
- High specific properties
- Infinite resource
- High vibration damping
- Acoustical insulation

kelteks FormMat

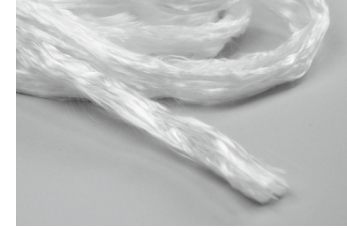


kelteks FormMat is an innovative three-layer complex technical fabric with a middle layer of fleece intended for fast and even impregnation of laminate. High volume fabric without chemical binders for better resin flow & final surface finish.

CHARACTERISTICS

- saves time
- super volume
- mechanically bonded
- mechanical properties

kelteks Edge Protector



MATERIAL

- Glass
- Carbon

ARTICLES

- Edge Protector 50, 75, 100, 200
- Edge Protector 50, 75, 100, 200 soft
- Edge Protector C500 Carbon

kelteks Edge Protector is suitable for all processes of composites making, such as hand lamination, vacuum infusion, pultrusion, etc. The transversely aligned entanglement fibers ensure a perfect bond to the overlying laminate layers.

kelteks REPAIR SYSTEM



MATERIALS

- woven roving
- chopped mat
- edge protector
- acetone
- peel ply
- polyester resin
- catalyst

TOOLS

- sand paper
- nitril gloves
- plastic mixing stick
- brush
- measuring cup

The only fiberglass repair kit on the market that contains everything you need to get your work done! Made for you: From professionals for professionals! Fiberglass is a very appreciative material for shipbuilding. And another great advantage is that almost any damage to fiberglass boats can be repaired.

kelteks Cargo System



kelteks FormMat is an innovative three-layer complex technical fabric with a middle layer of fleece intended for fast and even impregnation of laminate. High volume fabric without chemical binders for better resin flow & final surface finish.

CHARACTERISTICS

- saves time
- super volume
- mechanically bonded
- mechanical properties

Our creative R&D team of experts is constantly developing new technologies tested in our laboratory by experienced engineers in order to provide you with long-lasting and high-quality products.

We support you in every phase of your project. Whether in application consulting, assistance in dimensioning, or directly on the construction site or in the precast plant: we are there!