



kelteks.
the strongest link in your composite

The background consists of numerous thin, light gray lines that are layered and slightly offset from each other. These lines create a sense of depth and movement, forming a central peak that resembles a mountain range. The lines are most densely packed in the center and become more sparse towards the edges, creating a gradient effect. The overall composition is clean and modern, with a focus on geometric patterns and perspective.

the strongest link in your composite

kelteks.

the strongest link
in your composite



WHO WE ARE

We are a family owned business and we are proud of the long experience of our 350 well trained, highly educated and dedicated technical experts that ensure best products and services for you. You can trust us to be your partner for the complete value chain of your product, so that you can focus on your own business. Our 3 factories are located in the heart of Europe in beautiful Croatia, from where we supply our industrial customers in more than 30 countries. It goes without saying that we are certified according to DIN EN ISO 9001:2015 and DIN EN ISO 14001:2015

TABLE OF CONTENT

Applications

How we do it?

Woven Roving

Combimat

Complex & Needled

UD

Natural

FormMat

Edge Protector

Repair System

Cargo System



for every application there is a solution



NAUTICAL INDUSTRY

Croatia - A small country with the largest charter fleet in the world and the longest coastline along the Adriatic sea. Croats have a long maritime tradition, from boat building to nautical tourism. With around 40% of the world's nautical charter fleet having its destination in Croatia in 2019, this is the natural home of all boaters and the heart of the marine composites market in Europe. Kelteks is known in this industry as a trusted partner and supplier for more than 30 years.

AEROSPACE

Explore the world of aerospace innovation with our advanced composite textiles. Engineered to meet the rigorous demands of the aerospace industry, our materials redefine possibilities. Composite materials have been used in aerospace in applications such as engine blades, brackets, interiors, nacelles, propellers/rotors, single aisle wings, wide body wings. From lightweight structured to high strength components, our composite delivers high-performance, durability and efficiency.

SEWER RESTORATION

We offer a variety of reinforcement products for rehabilitation methods used to repair existing water or sewer pipelines. Developing and producing wide product range of reinforcements made of corrosion-resistant glass, carbon or basalt fibers for 30 years.

Complex (2 layer) reinforcement made of ECR glass are designed to deliver chemical resistance, extreme durability and high mechanical performance according to the customer's expectations.

ELECTRO INDUSTRY

The primary function of the products used in this application are electrical and thermal insulation. Their structure combines high-quality fibers, providing robust mechanical strength while providing excellent electrical insulation. These materials are key in creating reliable and safe electrical insulation solutions. Our materials find applications in various fields such as printed circuit boards, electric motor profiles, general engineering materials and more.

SPORTS & LEISURE

We always follow the development of new trends in these areas and with the persistent development of technology we position ourselves high and always raise the bar for the competition. Glass, carbon or basalt fibre-reinforced composites are part of professional and amateur sport and leisure equipment. Our clients use our composite reinforcement fabrics for many years and our goal is to supply & support the for mutual benefit.

DESIGN, HOME & FURNITURE

We can provide more solutions by adding specially developed reinforcements to your products which will increase the ultimate strength. Our solutions provide high resistance to impacts but at the same time are lightweight and can be applied with a different matrix to achieve excellent bonding to the surface. Strong but at same time lightweight! Best tailored solutions for your needs!

AUTOMOTIVE INDUSTRY

We are producing high-tech reinforcement fabrics in a large variety for demanding world of automotive industry. Our products will satisfy the highly specific tensile strength and resistance values as well as the excellent fire protection properties. Flexibility in producing all sorts of fabric, reaching high demand for quality and consistency in customized orders, depending on the particular demands of each customer. Benefits like significant chemical resistance, lightweight and strength makes these composite reinforcements suitable for automotive production where all these advantages are very important.



PULTRUSION INDUSTRY

Pultruded composites are commonly used in various industries for applications requiring a combination of strength, durability, and corrosion resistance. Some common uses include structural components for construction, industrial supports and reinforcements in infrastructure projects. Pultruded composites are also employed in creating lightweight yet robust components for the automotive and aerospace industries. Additionally, they find applications in the manufacturing of electrical insulators, utility poles, and components for marine structures, owing to their resistance to environmental factors such as moisture and chemicals.

RAILWAY INDUSTRY

Composite materials find diverse applications in the railway industry, spanning infrastructure, as well as interior and exterior components of rolling stocks. Within infrastructure, the notable benefits include superior corrosion resistance compared to metal, resulting in lower maintenance costs for composite poles and signalling equipment. Additionally, composite sleepers exhibit an extended lifespan and reduced weight compared to concrete, facilitating quicker and easier installation. This weight advantage also contributes to energy savings. In rolling stocks, the significant advantages lie in achieving a 30% weight reduction compared to metal, leading to enhanced energy efficiency. Moreover, the freedom of design afforded by composites allows for the creation of a wide range of interior and exterior components, shaping a more versatile and efficient railway landscape.

how we do it?

SALES & BRAND MANAGEMENT

Our sales team is always there for you. Along with other departments, we will listen to your ideas, accept challenges, and solve problems. There is a marketing department with which we take everything to an even higher level.

PRODUCT & MARKET MANAGEMENT

We support you in every phase of your project. Whether in application consulting, assistance in dimensioning, or directly on the construction site or in the precast plant: we are there!

RESEARCH & DEVELOPMENT

Our strength is research and development, where in cooperation with you we develop new products that meet all your requirements. The advantage behind this is that the laboratory is located under our roof, thus providing perfect solutions to various testing methods and services.

PRODUCTION

We leave nothing to chance. We have been developing our production process from the very beginning. This makes us independent, flexible and offers you the ideal reinforcement solution for every type of application. We are proud of different types of production "under one roof" and we are pleased to provide you with the highest quality products.

PACKAGING

Our goal is for our product to reach you in perfect condition and without damage, so we develop and produce packaging especially for you. The quality and appearance of the packaging are just as important to us as the product.

QUALITY CONTROL

All products go through our quality control, which once again checks and tests the finished product in our laboratory. The finished product leaves the quality control department only when it meets the highest criteria.

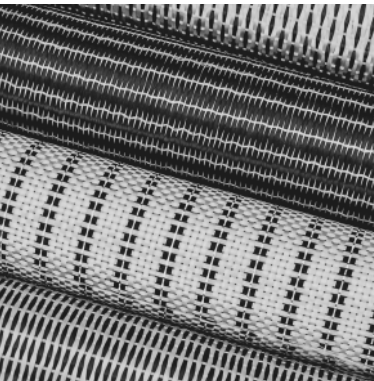
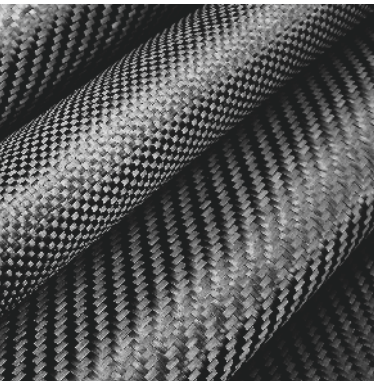
LOGISTICS & TRANSPORTATION

The last stop of the product before embarking on an adventure with you is our Logistics. Here we have control over the movement and storage of goods as well as our own fleet within the country and long-term cooperation with the largest partners in the transport organization. In this way, we provide a fast, high-quality and competitive transport offer.

Our creative R&D team of experts is constantly developing new technologies tested in our laboratory by experienced engineers in order to provide you with long-lasting and high-quality products.

keltex WOVEN ROVING

Woven roving is a reinforcement made from direct, assembled, or texturized fiberglass roving. Woven in a specific pattern for the purpose of providing high strength and lightweight to the end-product. Typically, the glass fiber content is a suitable sizing for multiple resin systems such as unsaturated polyester, vinyl ester and epoxy resins. Woven roving fabrics provide the best solution for raising the glass content of laminates and increasing overall laminate flexural and impact resistance without adding thickness, weight, or other non-reinforcing materials.



the strongest link
in your composites

MATERIALS

- Glass
- Carbon
- Basalt
- Natural
- Hybrid

CHARACTERISTICS

- Compatible with polyester, vinyl ester, polyurethane & epoxy resins
- corrosion resistance
- multi-purpose
- ultra-strong
- flexible
- good electrical insulation
- great impact-resistant properties
- fire-resistant
- low thermal expansion
- excellent resin flow



We are producing Combimat in many different variations, a combination of fabric with veil, mat or a combination of two fabrics layer. Solutions are unlimited in our production.

combine it
the way you
need it

TECHNOLOGY

- Needeling
- Stitching

CHARACTERISTICS

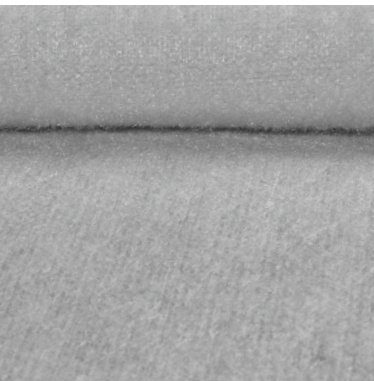
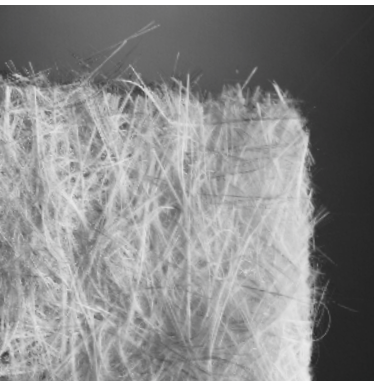
- **kelteks COMBIMAT** is made of E-glass or ECR glass
- Combination of woven roving fabric, chopped roving, mats or veil
- Production time is saved because multiple layers are used
- Used for thicker laminates
- Used as reinforcement
- Gives strength to the finished product
- There is no shedding when cutting
- Different resins can be used because it does not bond to a powder or emulsion mat



kelteks
COMPLEX

kelteks
NEEDED

kelteks is a leading producer of needed fabrics in Europe. We produce on our own specialized machines that we customized for the production of technical textiles. We are especially proud of the big variety of our specially developed high-performance needles.

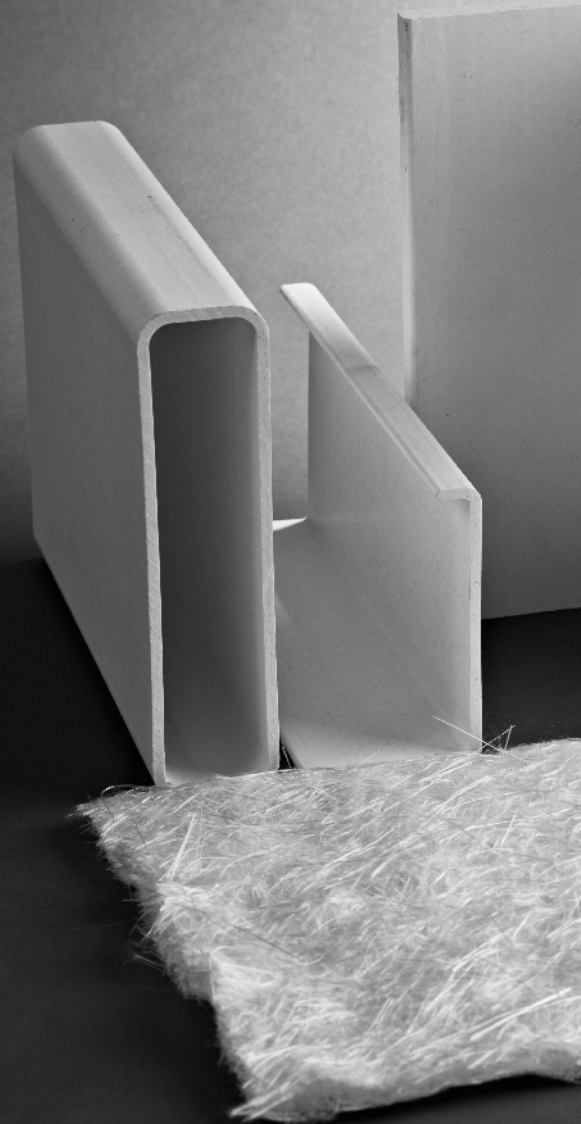


effectively supported
tensile & tear strength

This plus our in-house expertise and highly trained employees we can make any needed product for you. Fabrics we produce can be stitched, glued or needed depending on application demands. Volumized fabrics made of one or more layers, used as specific solutions for diverse applications.

CHARACTERISTICS

- Adds volume to the laminate
- Dedicated to parts with sharp angles
- Does not fray
- Gives a better surface aspect
- Improve the surface appearance
- Creates a barrier against UV or chemical attack
- Saves preparation time
- Perfect corner filling
- Improved resin flow



fibers in the
component
exactly where
it is required

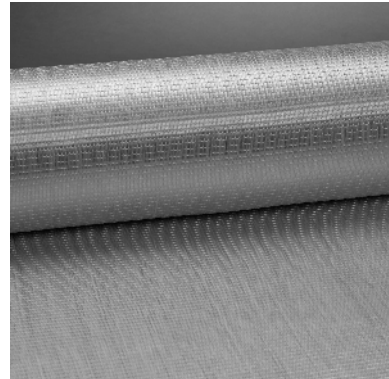
Unidirectional fabric constitutes a form of non-woven reinforcement characterized by the alignment of all fibers in a singular or parallel direction. This configuration enables a concentrated fiber density, resulting in optimal longitudinal tensile strength.

MATERIAL

- Glass
- Carbon
- Natural

CHARACTERISTICS

- Improved permeability
- Higher fatigue resistance
- Less resin consumption
- Better mechanical properties
- Improved component building speed
- better drappability
- higher delamination resistance and impact strength



the strongest link
in your composites

The increase in awareness of the importance of nature conservation and natural resources for our greener and sustainable future has led us to develop natural fibers as reinforcement for more environmentally friendly composites.



ARTICLES

- Woven Roving
- Grid
- UD

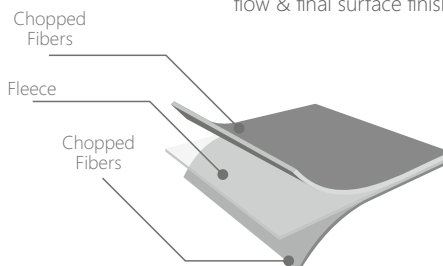
CHARACTERISTICS

- Good impregnation
- Lightweight
- Sustainable
- Bio-degradable
- Low energy consumption
- Co2 neutral
- High specific properties
- Infinite resource
- High vibration damping
- Acoustical insulation



go with
the flow

kelteks FormMat is an innovative three-layer complex technical fabric with a middle layer of fleece intended for fast and even impregnation of laminate. High volume fabric without chemical binders for better resin flow & final surface finish.



A voluminized complex is used as a specific solution for various applications.

Kelteks is one of the few companies that uses many different and advanced methods and processes to connect layers of composite reinforcements into complex fabrics.

CHARACTERISTICS

SAVES TIME

- Does not wear out during processing which gives a better surface aspect than most of other reinforcements.

SUPER VOLUME

- Premium fabric for sharp-edged parts because high-volume fibers allow optimal coverage of critical areas.

MECHANICALLY BONDED

- by the needle-loom process, without chemical binding adds volume to reinforcements which means greater part thicknesses can be achieved.

MECHANICAL PROPERTIES

- especially suitable for the manufacture of parts that require mechanical properties



real professionals
don't make
weak parts...
why would you?

kelteks Edge Protector is the NEW solution for the perfect corner reinforcement. Fluffy and cuddly fibers are easily squeezed into sharp-edged joints and corners so stress-cracking and laminate chipping is effectively prevented.



ARTICLES

- [Edge Protector 50](#)
- [Edge Protector 75](#)
- [Edge Protector 100](#)
- [Edge Protector 200](#)
- [Edge Protector 50 soft](#)
- [Edge Protector 75 soft](#)
- [Edge Protector 100 soft](#)
- [Edge Protector 200 soft](#)
- [Edge Protector C500 Carbon](#)

CHARACTERISTICS

- The structure of the **kelteks** Edge Protector is fluffy and cuddly and is available in different thicknesses. It can be easily moulded and, as an insert in the preform, it adapts well to any contour. Fluffy and cuddly fibers are easily squeezed into the sharp-edged joints and corners.
- Sharp-edged joints and corners in critical component areas are thus reliably filled with fibers and laminate chipping is effectively prevented.
- **kelteks** Edge Protector is suitable for all processes of composites making, such as hand lamination, vacuum infusion, pultrusion, etc.
- The transversely aligned entanglement fibers ensure a perfect bond to the overlying laminate layers.



professional kit for great results

The only fiberglass repair kit on the market that contains everything you need to get your work done! Made for you: From professionals for professionals! Fiberglass is a very appreciative material for shipbuilding. And another great advantage is that almost any damage to fiberglass boats can be repaired.

CHARACTERISTICS

- Set contains some of our premium products such as **kelteks** Woven Roving 300g, **kelteks** Chopped Strand Mat 300g, and **kelteks** Edge Protector, which is a unique product intended for strengthening the angles of composites, larger cracks, holes, etc.
- **kelteks** Repair System is equipped with sandpaper for substrate preparation and Peel Ply fabric. Peel Ply fabric is placed as a final layer on the laminate and allows work to continue without additional sanding.
- Inside you can find Polyester resin, Catalyst, and top quality acetone for cleaning.
- As we are many years present in this niche adding an additional Measuring cup, Plastic mixing stick, Resin application brush, and Protective Nitrile gloves was a natural thing for us.



WOVEN ROVING
2,0 m²



CHOPPED MAT
2,0 m²



EDGE PROTECTOR
5,0 m



ACETON
0,25 L



SAND PAPER
10 x 20 cm



GLOVES NITRIL



PEEL PLY
2,0 m



POLYESTER RESIN
0,75 L



CATALYST
10 ml



PLASTIC MIXING STICK



BRUSH



MEASURING CUP
1,0 L



standard
rack for
non-standard
cargo

kelteks Cargo System is the solution based on our long-term industry experience. It is suitable for heavy loads and non-standard sizes because of its easily collapsible sidewalls. The heavy-duty construction of the container keeps fragile cargo protected and secured into position during transportation or when stored in warehouse.

TECHNICAL SPECIFICATION

- Net weight: **300kg**
- Max load: **2000kg**
- Max gross weight: **2300kg**
- Superimposed load: **6600kg**
- Height(open): **1240mm**
- Height(folded): **365mm**
- Length: **3350mm**
- Width: **1200mm**
- Cargo space: **4m²**
- Loading capacity: **3,2m³**
- Load fitting: **3 Euro pallets**

CHARACTERISTICS

2IN1 SOLUTION

✓ pallet for the transport of goods or stand alone mobile shelf for storing goods.

MAKES SPACE

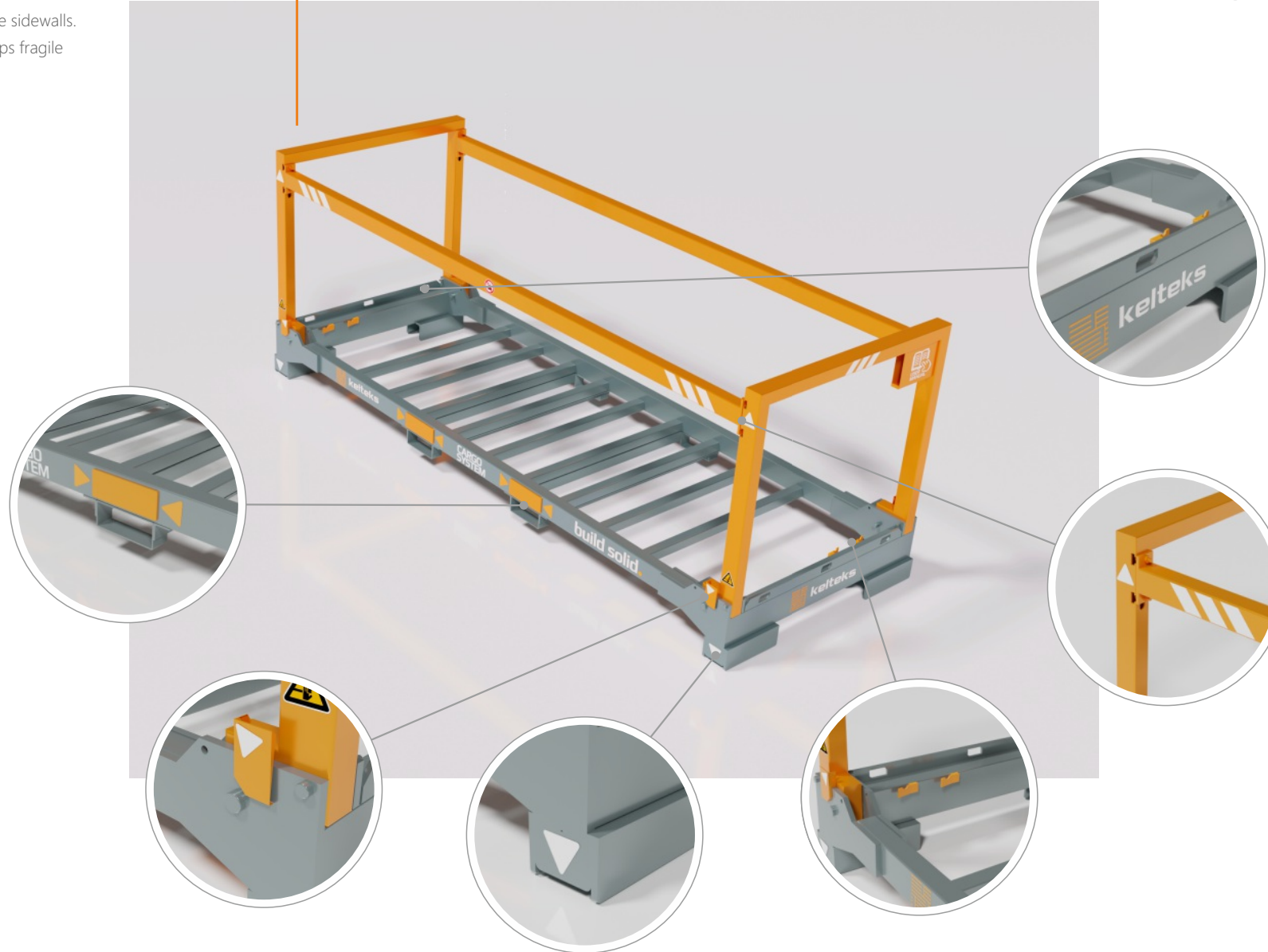
✓ 3 loaded pallets and 8 disassembled pallets can be stacked on top of each other

FITS PERFECTLY

✓ 16 loaded (open) pallets and 64 disassembled (folded) fit into standard 13m truck.

ISO STANDARDS

✓ kelteks Cargo System is manufactured according to ISO 1090-1



Stack up! 3 open or 8 closed

You are the owner of your space and you decide how you will use it!

kelteks Cargo System will never take up extra space if your warehouse is empty. Just assemble it and place it in your desired position to make room for things that are important to you, like a new machine maybe! Since it is galvanized the pallet will not mind if you leave it outside in the rain or snow.

EASY STACKING



3 loaded or 8 disassembled pallets can be stacked on top of each other.

MOBILE & MODULAR



Use it as a mobile shelf in your warehouse which doesn't have to be fixed to the wall/floor and is easy to manipulate.

GSL SYSTEM



Our Guide Slide Lock system ensures easy manipulation and safe pallet stacking.

HIGH LOAD CAPACITY



Robust steel construction is suitable for heavy loads and ensures long service life.

EASY MANIPULATION



Double forklift pockets enable lifting the pallet from all 4 sides - you have an easy access to the pallet wherever you place it.

MAKES SPACE



3x more space in your warehouse by stacking loaded pallets on top of each other. Gives you the space to grow your business.

TIME SAVING



Fast assembly / disassembly and manipulation.

SAVES RESOURCES



Zero waste of disposable and non-returnable wooden or plastic pallets.

COLLAPSIBLE WALLS



The perfect solution for oversized loads and sensitive or fragile materials.

LOAD & SECURE



Security locks and strap holders for extra protection and more options to protect your cargo.

NON CORROSIVE



Galvanized steel construction for long service life.

HI VIZ



Safety first! High visibility reflective labels and markers.



the solution
for every
application

Iceland
Liechtenstein
Norway grants

**Working together for a green,
competitive and inclusive Europe.**



Contact

📍 Dr. Slavka Rozgaja 3
47000 Karlovac Croatia - EU
☎ +385 47 693 314
✉ sales@solidian-kelteks.com



build solid.

